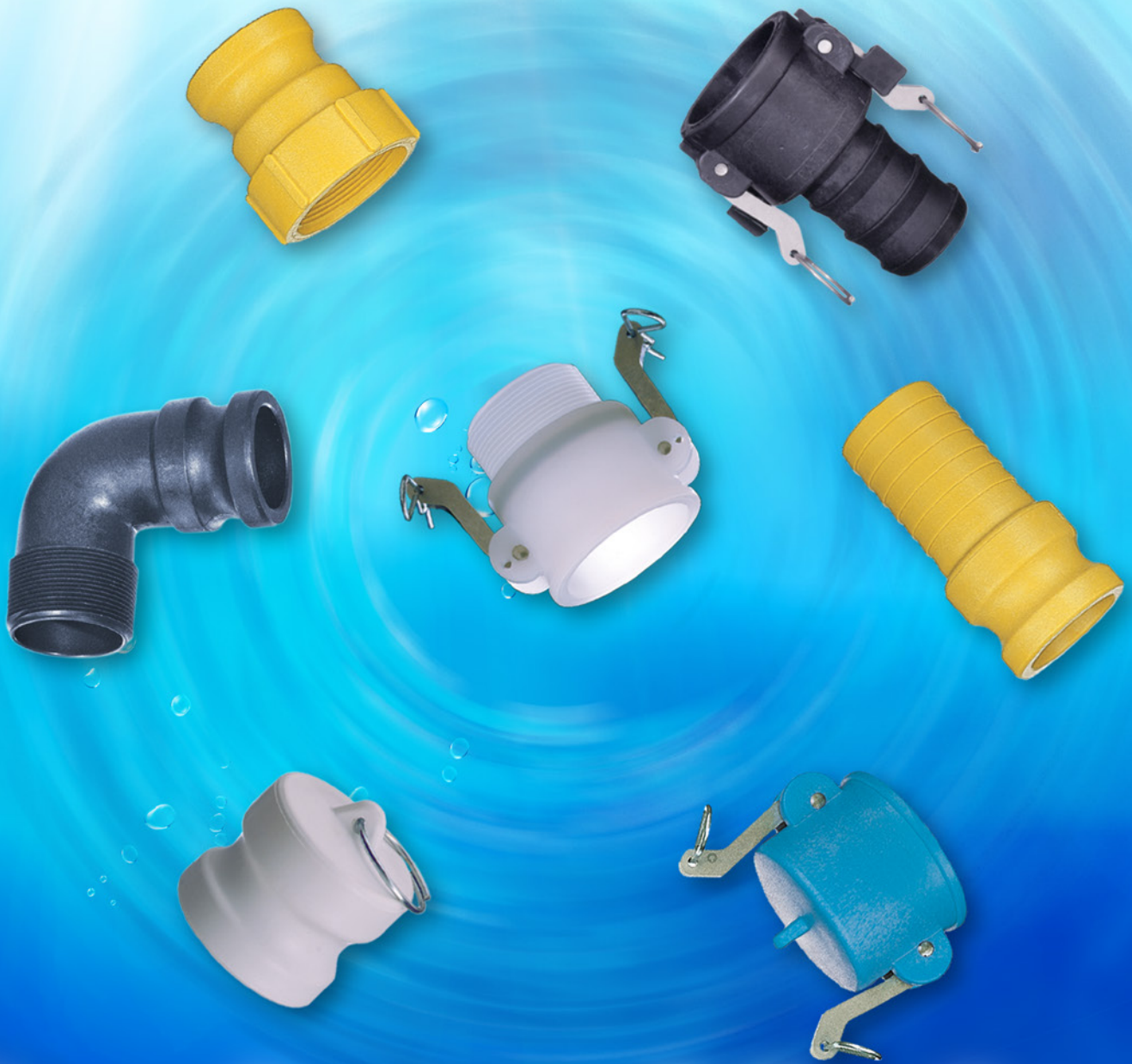




BEE VALVE INC.



Couplers & Adapters

Specializing in Fluid Handling Components

Heavy-Duty Polypropylene Coupler/Adapters

1/2" – 4"

- Extra thick walls, extra strength
- Safety Latches available on all couplers ranging in size from 1-1/4" to 3"
- Manufactured from glass-reinforced polypropylene for stability, strength and toughness
- Temperature range from 10°F to 180°F

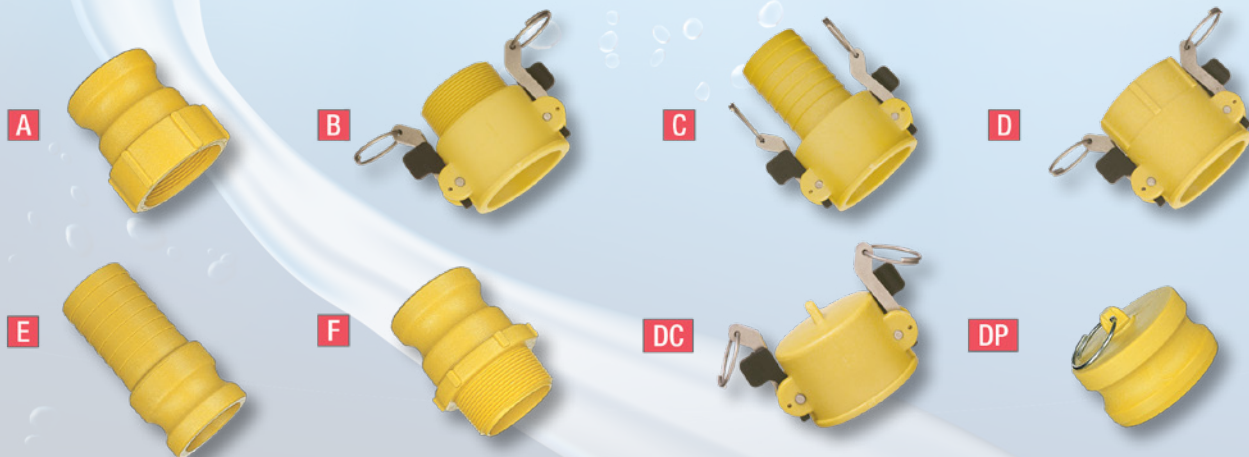


Nylon, Glass-Filled Coupler/Adapters

1/4" – 4"

- Safety latches available on all couplers and dust caps ranging in size from 1-1/4" to 4"
- Lightweight-1/2 the weight of aluminum
- Strong—resists cross threading, thread seizure and "out-of-round" condition
- Non-conducting
- Temperature range under normal conditions -30°F to 200°F

Also available are the new, 4" heavy-duty 404 Series nylon couplers/adapters. The 404 Series have a heavier wall construction than the standard for greater strength. All 404 Series couplers come standard with four stainless steel handles for a more secure connection in higher-pressure applications.



Pipe, Hose & Nozzle Fittings

- Sizes 1/2" – 4"
- NPT x Hose Barb

- Available in five materials for a full range of applications



Glass-Filled Nylon

- 1/2" – 4"
- Strong, lightweight
- Temperature range under normal conditions -30°F to 200°F



Glass-Filled Polypropylene

- 1/2" – 4"
- Chemical resistant to most acids
- Temperature range under normal conditions 10°F to 180°F



Food Grade Polypropylene

- 1/2" – 3"
- FDA / NSF compliant material
- Temperature range under normal conditions 10°F to 180°F



Polyvinylidene Fluoride (PVDF)

- 1/2" – 3"
- Strong and chemical resistant
- Contact customer service for FDA/NSF compliance
- Temperature range under normal conditions -20°F to 300°F



316 Stainless Steel

- 1/2" – 4"
- Excellent chemical and corrosion resistance
- Use for food service and processing
- Conductive

Polyvinylidene Fluoride (PVDF) Coupler/Adapters

1/4" – 3"

- Nonflammable and self-extinguishing
- UV stable in the visible spectrum
- NSF compliant material
- Temperature range under normal conditions -20°F to 300°F

A



B



C



D



E



F



DC



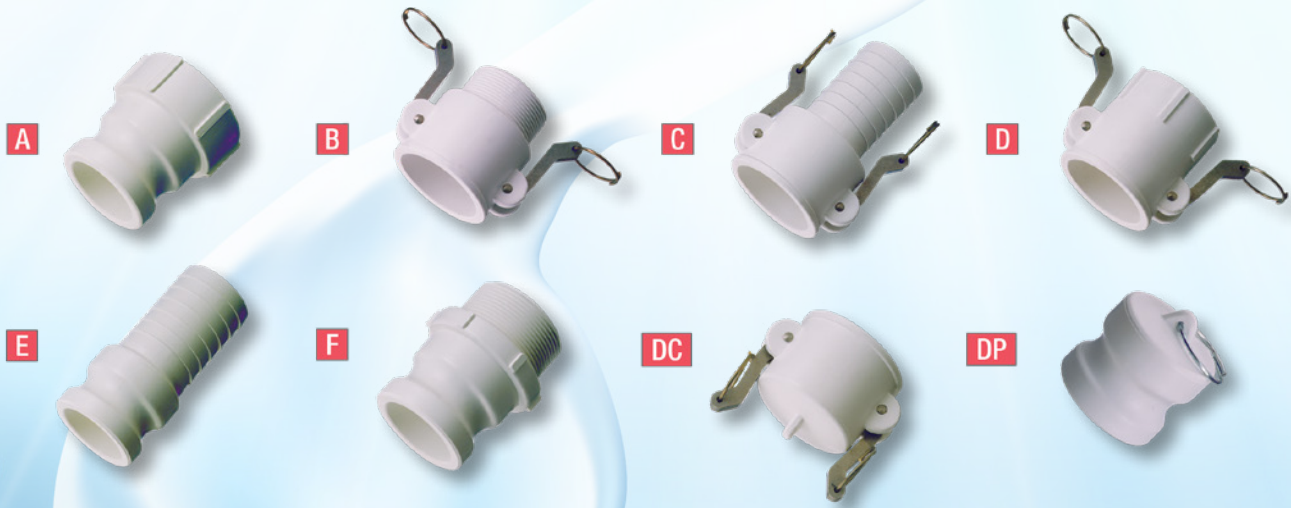
DP



Food-Grade Glass-Filled Polypropylene Coupler/Adapters

3/4" – 3"

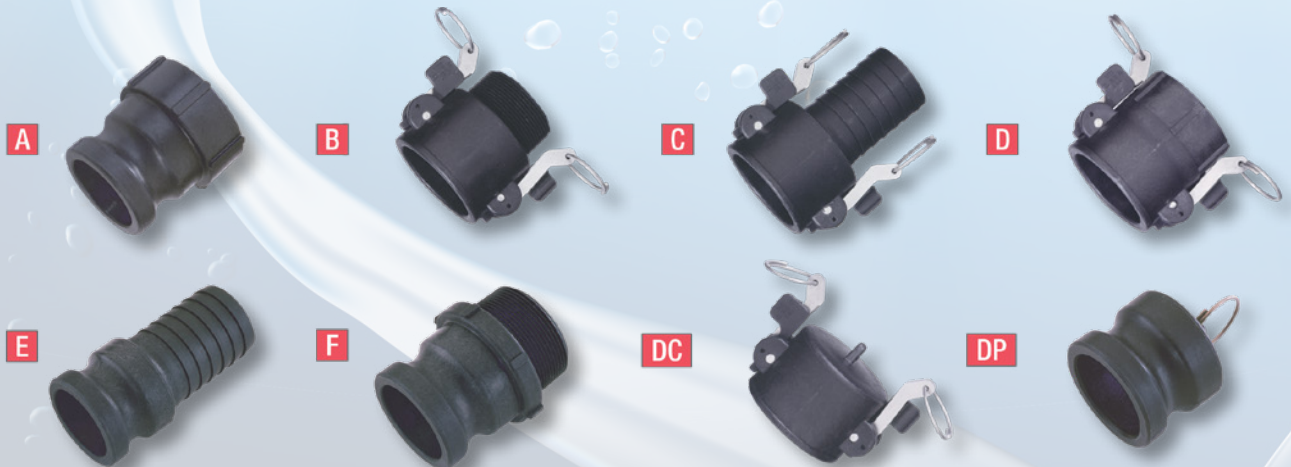
- FDA / NSF compliant material
- Nitrile gaskets furnished as standard. EPDM, Buna-N and Viton® also available
- Good mechanical strength
- Resistance to alkalis, salts, alcohols, phosphoric and hydrochloric acids, and animal, vegetable and mineral oils
- Temperature range under normal conditions from 10°F to 180°F



Polypropylene Glass-Filled Coupler/Adapters

1/4" – 3"

- Safety latches available on all couplers and dust caps ranging in size from 1-1/4" to 3"
- Chemical resistant to most acids. Refer to the website for specific recommendations in the chemical resistance table.
- Temperature range from 10°F to 180°F
- All couplers feature stainless steel handles & pins
- Interchangeable with other couplers and adapters manufactured to MIL-spec
- EPDM gaskets furnished standard. Buna-N, Viton® and Nitrile also available



Elbow Coupler/Adapters

2"

- Manufactured from glass-reinforced polypropylene for stability, strength and toughness
- Safety latches standard on all couplers
- Temperature range from 10°F to 180°F



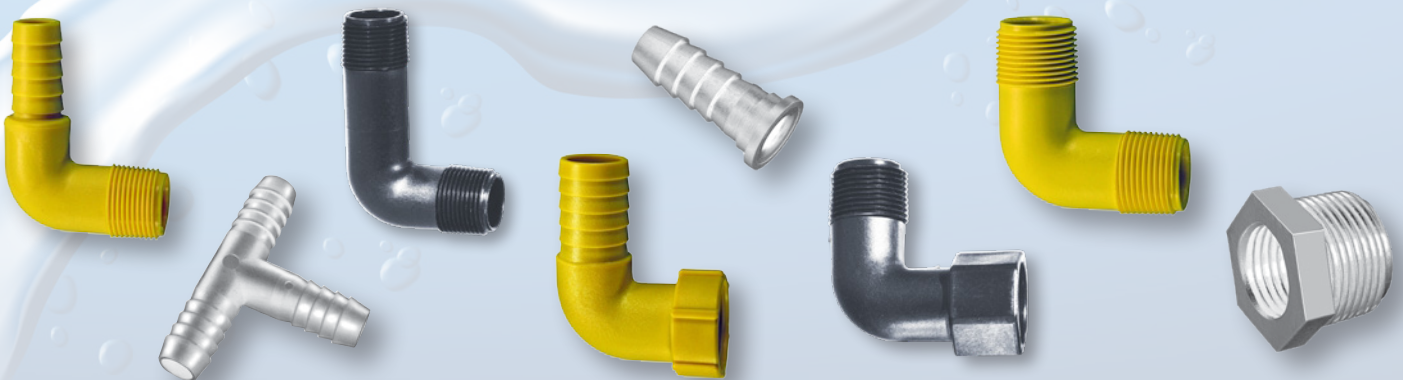
Manifold Flange Fittings

- Quick and easy assembly. No pipe tape or sealant necessary
- Positive seals
- Easy on/off connections
- 360 degree orientation
- Valves and fittings are manufactured from glass-reinforced polypropylene for strength and durability
- Will not rust or corrode
- Ranging in size from 1" to 3"



Polypropylene & Nylon Hose and Tube Fittings

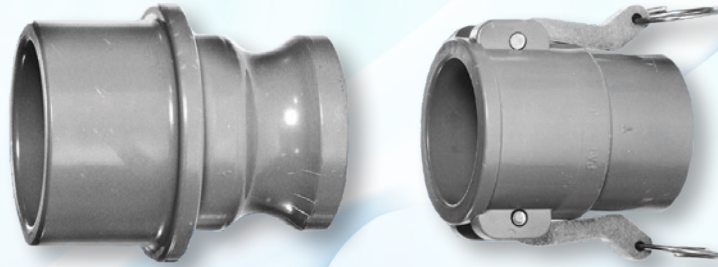
- Precision molded ranging in size from 3/4" to 1 - 1/2"
- Molded in polypropylene and nylon
- NPT threads
- Operating Pressure of 100 psi max @ 70°F



PVC Couplers and Adapters

1/2" – 3"

- Use with PVC pipe
- Easy to install
- Socket solvent weld (cement)
- Stainless steel handles, rings & pins
- EPDM gaskets standard
- Economical
- Weather & corrosion resistant



Santoprene® Dust Caps and Plugs

2", 3", 4"

- Use to cap off pipes, keeps interior clean and dry
- Does not hold pressure
- Low cost
- Color options available
- Stainless steel arms, pins and rings standard
- Protects mating fittings

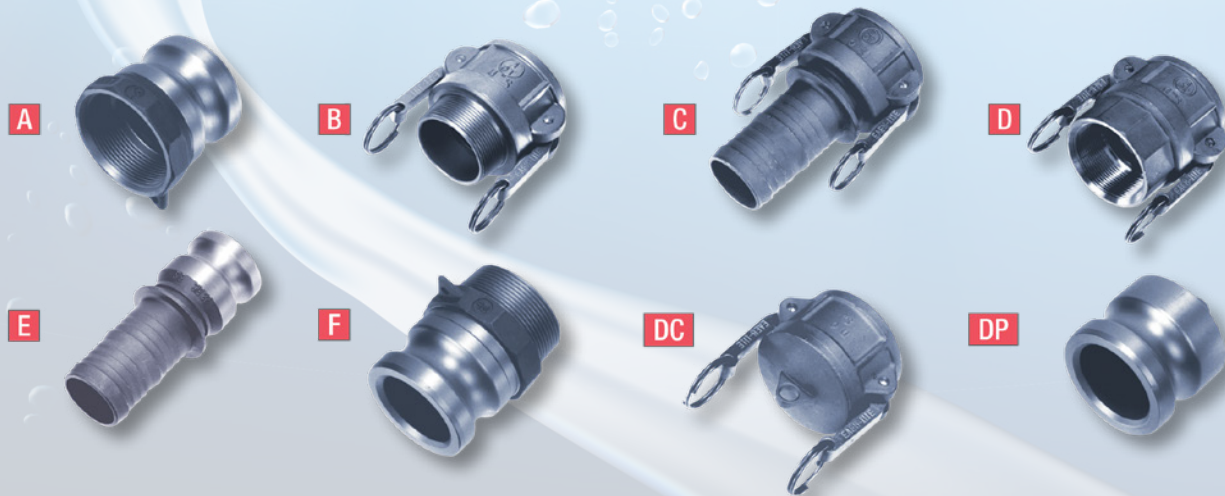


Stainless Steel and Brass Couplers and Adapters

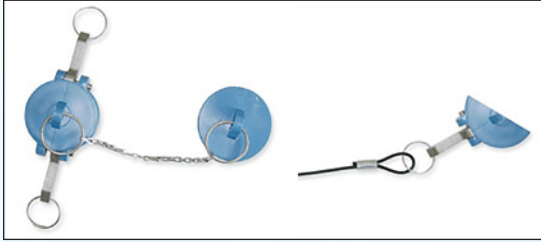
Stainless Steel: 1/2" – 4"

Brass: 1/2" – 3"

- 304 SS and 316 SS grades available
- Interchangeable with other couplers and adapters manufactured to MIL-spec
- Buna-N gaskets furnished standard. EPDM and Viton® also available
- Chemical resistant (Refer to chemical resistance table for specific recommendation)



Lanyards



SS Sash Chain or Nylon Coated SS Wire-Rope

Gaskets

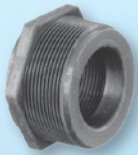
- Materials: EPDM, Viton, Buna and Food Grade
- Standard and extra thick available
- Ranging in size from 1/2" to 4"



Polypropylene Schedule 80 Fittings

Plug

1/2" – 3"



Street Elbow, 45°

3/4" – 2"



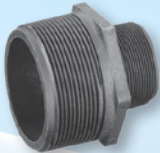
Elbow, 90°

3/8" – 3"



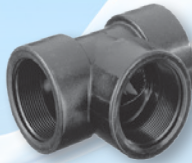
Reducer Nipple

1/2"x3/8" to 4"x3"



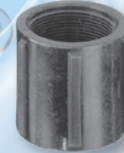
Tee

3/8" – 3"



Coupling

3/8" – 3"



Street Elbow, 90°

3/8" – 3"



Cap

1/2" – 3"



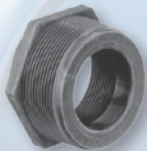
Nipple

3/8" – 4"



Reducer Bushing

3/8"x1/4" to 3"x2"



Cross

3/4" – 2"



